

Cardigan Netpool PARRC Report

August 2016



Report prepared by CAVO ☎ 01570 423 232 📧 gen@cavo.org.uk



Cymdeithas Mudiadau Gwirfoddol Ceredigion
Ceredigion Association of Voluntary Organisations

Contents

Introduction & Background.....	2
Methodology	2
Description of Area	3
Results of Consultation.....	4
Who Attended?.....	4
What They Said?.....	5
Key Findings and Future Actions	6
Appendices	7
Action Plan Template	7
Postcard Survey.....	8
Key Community Statistics	9
Full Consultation Results	9
Community Conversations.....	12

Introduction & Background

This is one of a series of reports documenting the results of consultations held to identify the importance of recreational areas to communities throughout Ceredigion and any necessary improvements, funded through the Rural Development Programme. The report concludes with a number of key findings and possible actions to take forward the ideas suggested by consultation participants. With the support of the community, the Town Council, Ceredigion County Council, CAVO and Cynnal y Cardi the content of this report will be used to support funding applications to realize the communities' vision for their recreational area.

Methodology

This engagement exercise was held on the 27th August as part of the annual Skate Park Jam. This annual summer event is held in memory of a former popular skateboard park user who sadly died a few years ago. The event already has a following in the community and with skateboard park users.

A local community leader had engaged with local businesses to provide sponsorship in the form of prizes for the competitions to be held and free food was on offer to attract more people to the event. Even the weather had been persuaded to join in the marketing plan and the sun shone.

The consultation event and material were very 'young person friendly' in order to engage with our key stakeholders effectively. The consultation was interactive and bilingual using short structured discussion sessions and image based questionnaires.

Promotion/Marketing

The event was advertised by poster, word of mouth and via social media. Local representatives distributed hard copies of the invitation and circulated an electronic version to encourage community participation.

Survey Questions

The content of the consultation survey was intentionally kept short and simple and focused on three key areas what participants use to stay active in their community, why these places and spaces are important and what would people change in their community to encourage people to stay active. We also asked participants to rate their level of activity from 1 to 10. A second survey was developed as a guide to conduct more detailed conversations with key community stakeholders.

Description of Area

Cardigan Netpool is part of what was once the port of Cardigan. When the town of Cardigan was established in 1110 it became an important trading point. Woollen cloth was exported to Arras in France for use in the weaving of tapestries and commodities such as corn and limestone were imported.

By Elizabethan times, Cardigan had grown into one of the most important ports in Wales. During the following century the shipbuilding industry became established and the port of Cardigan grew larger dealing in commodities ranging from salt to prunes and from corn to tar.

When the Teifi estuary began to silt up making access difficult for larger ships, and the railway came to Cardigan in 1886, the port began to decline and within just 20 years there was little left of the trade that had once been greater than most British ports. By the turn of the 20th century the Netpool, where hundreds of ships had been built, had already become a recreational area.

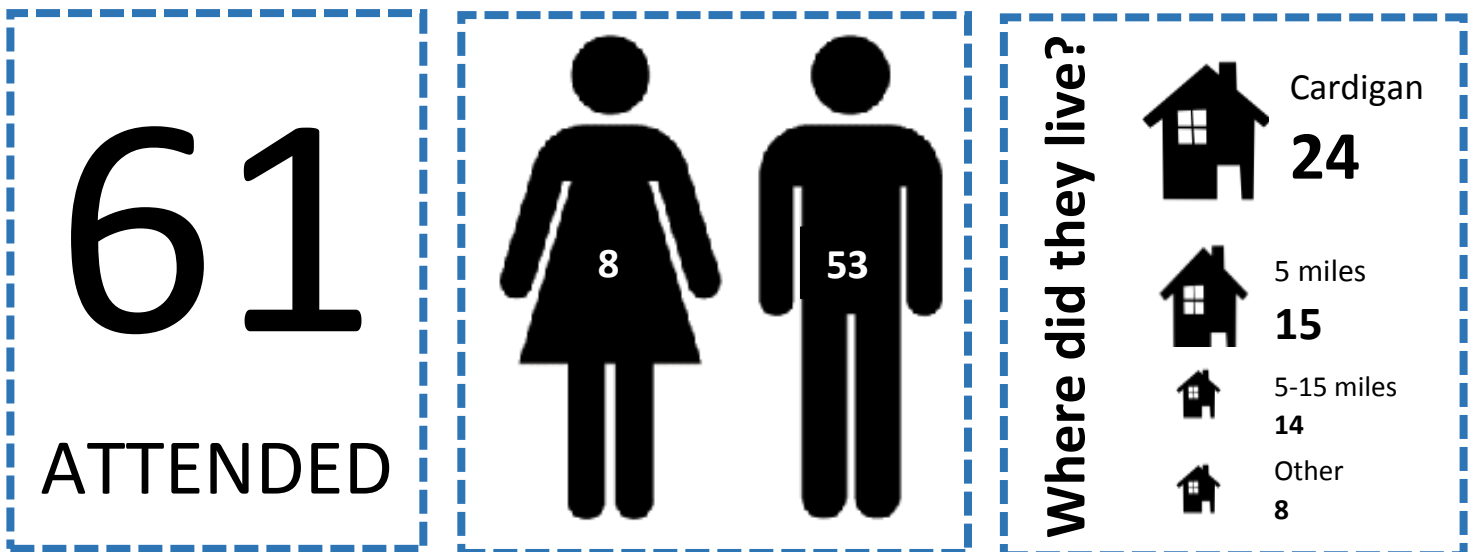
Cardigan is a historic market town with a very newly renovated castle at a strategic point on the river Teifi. Cardigan has a vibrant contemporary arts scene with meeting places galleries and markets, a lively shopping centre with independent shops, cafes, pubs and restaurants. In relation to leisure facilities, Cardigan has a number of sports clubs and societies along with the Teifi Leisure Centre and a community run Swimming Pool which also has a gym, sauna and fitness classes. It is a town with a great sense of community with several significant community owned assets including Theatr Mwldan, Small World Theatre, Cardigan Guildhall and the Pwllhai site and car park



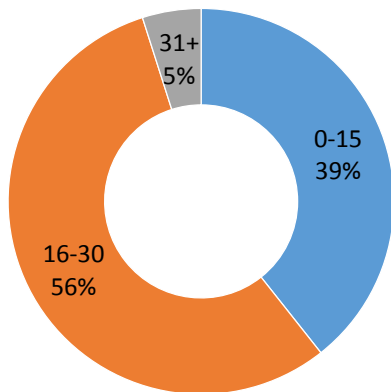
Results of Consultation

Who Attended?

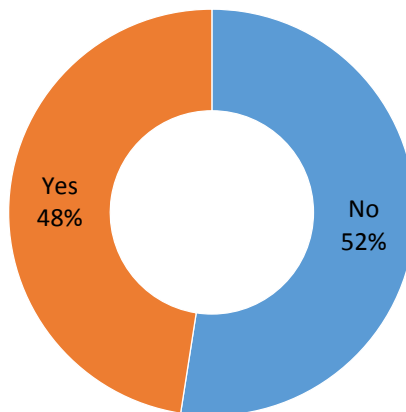
61 individuals attended the consultation session, 24 lived within the Cardigan area, with the stake park attracting people from the as far as Aberystwyth and Maenclochog. The majority of individuals attending were male, a high percentage were young people with 56% of those attending aged between 16 and 30. There was a fairly even split of those who were able to speak Welsh and those not able to speak the language and 8% classified themselves as having a disability.



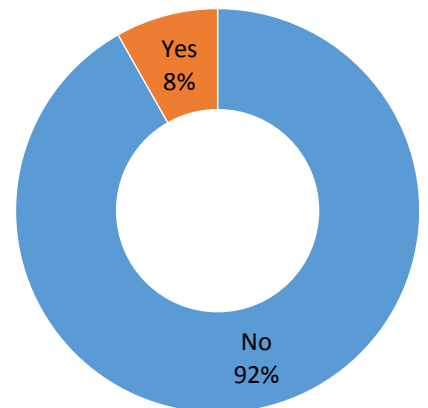
Age



Welsh Speaker



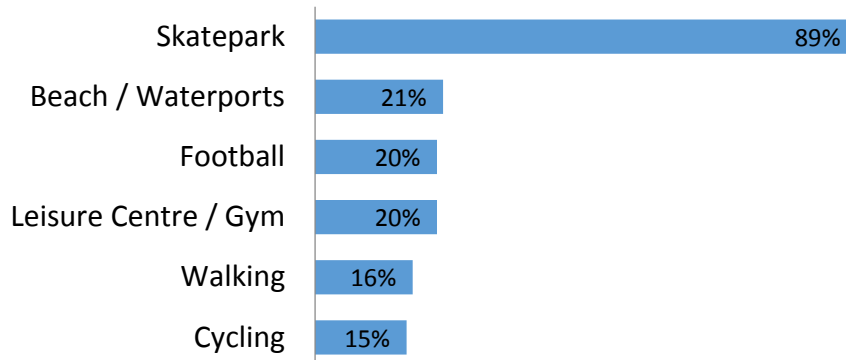
Disability



What They Said?

When asked what do people do and use in Netpool to stay active a vast majority of participants said skating. People felt that the space is important as it is free to use and gives the option for people to participate if they want to. Recommendations for changes were focused on the skate park including resurfacing, more organized events and lighting. The full results can be seen in the appendices.

Top 6 things people use or do to keep active



Why are play/open spaces important.



Things to change in Netpool to help people stay active

1. Resurface skatepark
2. More skating events/competitions/workshops
- 3= Improve maintenance of community facilities – parks & pitches
- 3= Lights in the skatepark

Key Findings

The Skatepark is well used and supported. It has made a positive impact on the lives of the young people who use it and consider it a safe place to socialise and gain new skills. There are dedicated individuals who are committed to making the necessary improvements to safeguard the facility and its future as a significant community asset.

Three key improvements were highlighted during discussions with the 61 attendees at the event;

- The Skatepark needs to be resurfaced and drainage needs to be improved to be fit for purpose and safe future use;
- There is strong support for skateboarding events held in Cardigan from a wide geographic area. Further events, workshops and competitions need to be planned with users to strengthen this participation.
- For safety and increased usage of the facility throughout the year, an appropriate lighting system needs to be installed along with some bins and more benches.

Future Actions

- Support Friends of Cardigan Skatepark FOCS to become properly constituted.
- Support FOCS to look for funding to implement some of the suggestions from the consultation.
- Maintain links with the network of Skateparks in the area.
- Identify costs of resurfacing work and lighting options.
- Work with the Town Council to access match funding.
- Co-design a programme of events, workshops and competitions with Skatepark users.
- Submit applications for Awards for All Wales and Tesco “Bags of Help” Scheme.

Appendices

Action Plan Template

Basic Planning Tool

Objective:						
Intended Outcomes:						
What needs to be done?	How are you going to do this?	By when?	Who will be responsible?	What will we need?	What needs to be done?	How will we know if we have been successful?
Tasks	Strategy	Time frame	Structure / Partners		Resources	Monitor /Evaluate

Postcard Survey

PARRC – Village Party Survey

Location: _____

What 3 things do people use and do to stay active in your community?

1.
2.
3.

Why do you think these spaces / places are important?

.....

.....

.....

What 3 things would you change in your community to help people stay active?

1.
2.
3.

On a scale of 1 to 10 how active are you?



1 2 3 4 5 6 7 8 9 10



Key Community Statistics

The Netpool area is located within Cardigan – Teifi Lower Super Output Area (LSOA). LSOA all have a population of around 1,600 people for easy comparison. Cardigan Teifi LSOA is classed as **Rural town and fringe in a sparse setting**.

Population

In 2015 the estimated resident population for Cardigan – Teifi was 1,148. The population density was 241 people per km², compared to 42 people per km² for Ceredigion and 149 people per km² for Wales. In the last five years, the population has seen a decrease of 1.3% (15 people). (*InfoBase Cymru website*)

Population by age band						
All Ages	0-15 year olds		16-30 year olds		People aged 31+	
1,148	262	23%	242	21%	644	56%

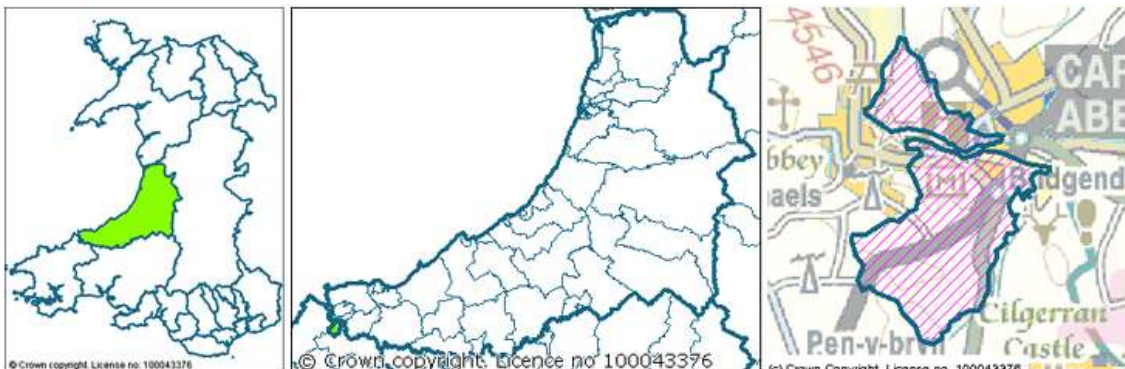
67% of people living in Cardigan – Teifi were born in Wales, 29% were born in the UK, outside of Wales and 5% were born outside of the UK. 47% of people aged 3 and above reported they could speak Welsh (*2011 census*).

Welsh Index of Multiple Deprivation (WIMD) 2014

The WIMD is the official measure of relative deprivation for small areas in Wales. It is designed to identify those small areas where there are the highest concentrations of several different types of deprivation – Income, Employment, Health, Education, Access to Services, Community Safety, Physical Environment and Housing.

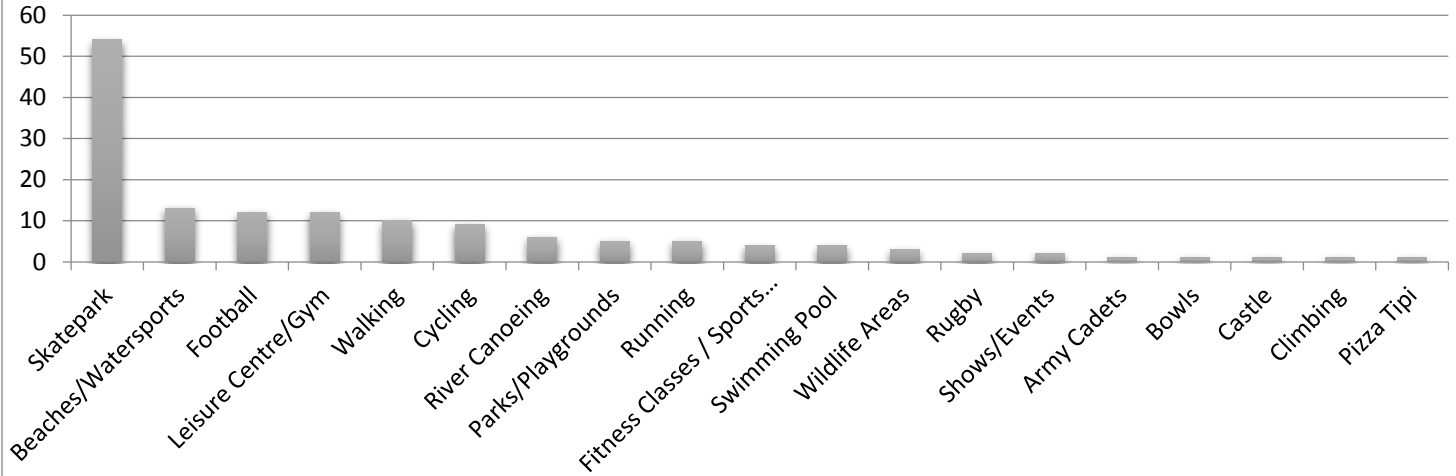
In 2014 Cardigan -Teifi ranked 149th out of 1,909 in Wales on the WIMD (where 1 is most deprived). It is in the 10% most deprived areas in Wales. (*Local Government Data Unit – Wales*)

43% of the children in Cardigan - Teifi live in low income families (families in receipt of Child Tax Credits whose reported income is less than 60 per cent of the median income or in receipt of Income Support or Income-Based JSA, divided by the total number of children in the area) (*InfoBase Cymru website*).

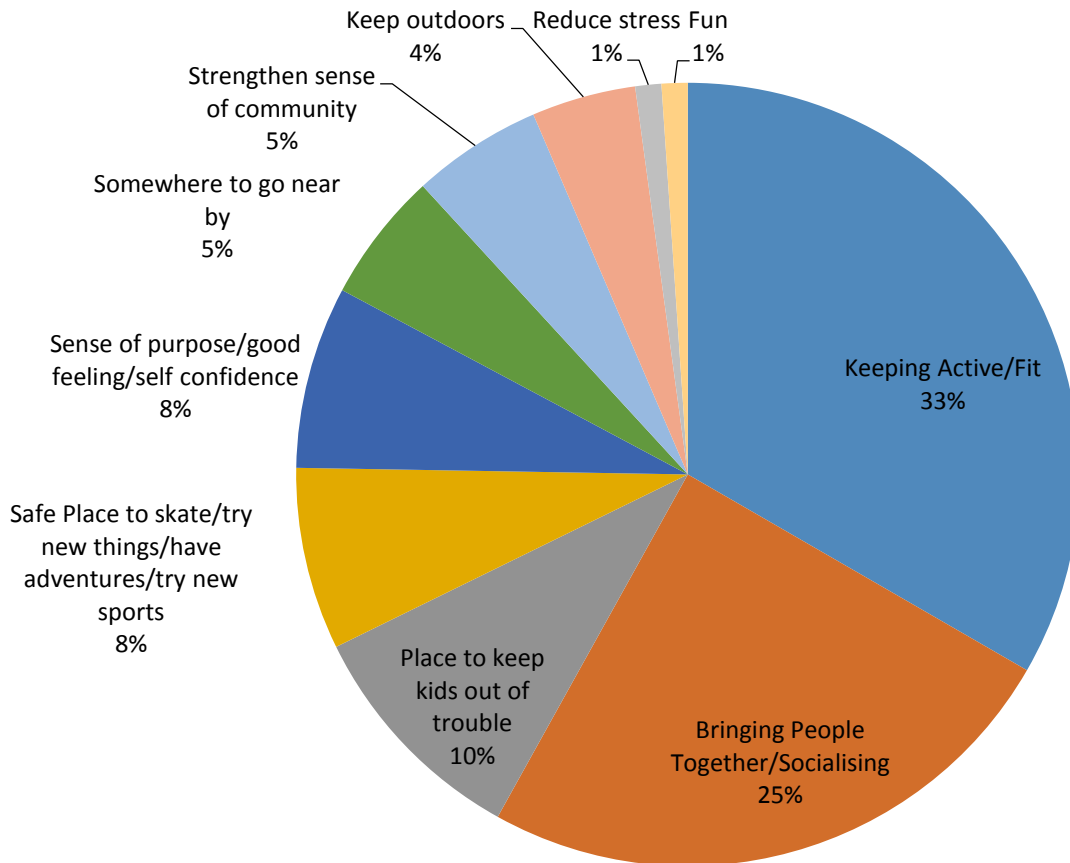


Full Consultation Results

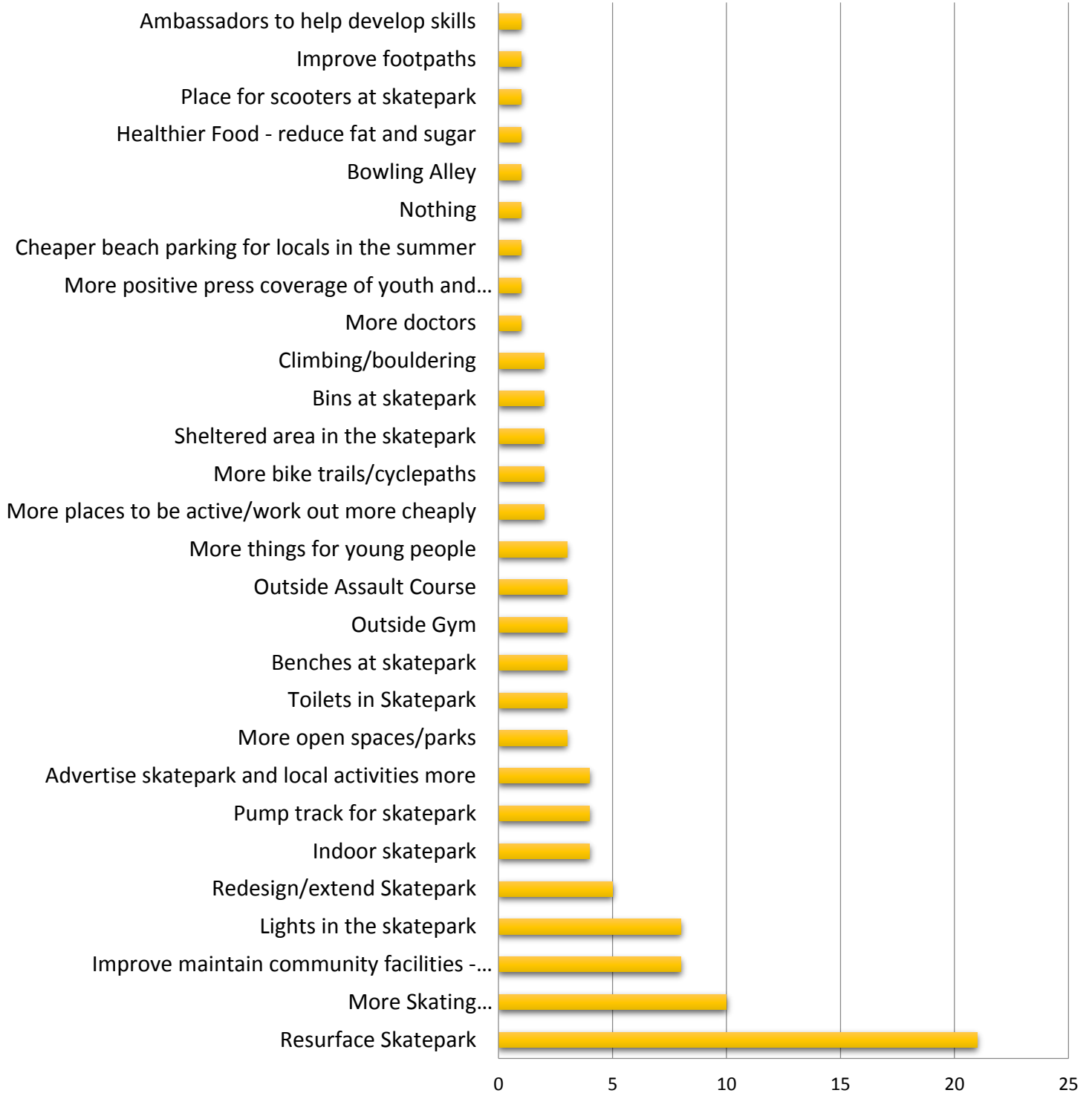
What things do people use and do in your community to stay active?



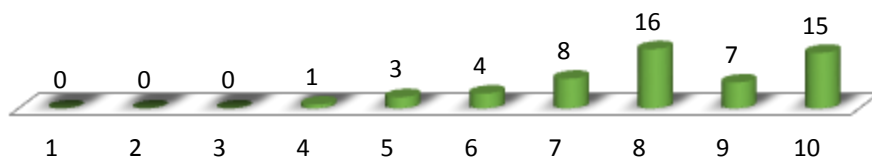
Why do you think these spaces/places are important?



What things would you change in your community to help people stay active?



On a scale of 1 to 10 how active are you?



Community Conversations

Community leader and mayor of Cardigan

- A good sense of community.
- Good kids.
- Some key community 'activists' who need to be supported.
- Good support from local businesses.
- Need more positive publicity.
- Listen to the young people.
- Help the community to help itself.
- Help for those who can't help themselves.

Comments and Ideas for the Skatepark

<u>Ideas of ways to enhance the Skatepark</u>	
Pay as you go Lighting (x 5)	Shelter (x 2)
Resurfacing (x 4)	Toilets (x 2)
Pump track (x 4)	Long board track
More bins – concrete (x 4)	Half pipe
Fix the benches and more benches (x 3)	A spine ramp

General comments

- Improvement and maintenance to the skatepark is essential
- Lighting would be good; we finish work at 5 and it's too dark to skate after that in the winter.
- My 2 boys are 14 and 11, they've been coming here since they were 5. They've spent hours and hours here. I used to come up with them but I don't now they're older. It's been a while since I've been here – I can see the state of the park has deteriorated a lot, I can see the cracks.
- The older kids always look after the younger ones.
- When it's raining the bowl floods – the drainage needs sorting out
- I would like a licence to be able to put a trailer here and sell food
- People came up from Haverfordwest Skatepark, they said,.....
"It costs £3,300 per year to run Haverfordwest park – this covers the insurance and lighting. We have 24/7 CCTV which has come in handy because the shelter's been vandalised.
- The manager of Ramps in Llanelli is applying for grants to come out and run tutor sessions for scooters and bikes and skaters (some of the older skaters at Netpool say they teach the younger ones anyway).
- We need a concrete bin at the end of the park – who would empty it? It needs to be very heavy so it can't be moved.
- Ideas for Awards for All application – lighting (with tokens), bins and drainage.
- Cilgerran MUGA has lighting that you need tokens for. You buy tokens from the shop and they shut off at 9pm.