

Llanon PARRC Report

August 2016



Cyngor Sir
CEREDIGION
County Council



Report prepared by CAVO ☎ 01570 423 232 💻 gen@cavo.org.uk



Cymdeithas Mudiadau Gwirfoddol Ceredigion
Ceredigion Association of Voluntary Organisations

Contents

Introduction & Background.....	2
Methodology	2
Description of Area	3
Results of Consultation.....	4
Who Attended?.....	4
What They Said?.....	5
Key Findings	6
Future Actions	6
Appendices	7
Action Plan Template	7
Postcard Survey	8
Key Community Statistics	9
Full Consultation Results	10
Community Conversations.....	12

Introduction and Background

This is one of a series of reports documenting the results of consultations held to identify the importance of recreational areas to communities throughout Ceredigion and any necessary improvements, funded through the Rural Development Programme. The report concludes with a number of key findings and possible actions to take forward the ideas suggested by consultation participants. With the support of the community, the Community Council, Ceredigion County Council, CAVO and Cynnal y Cardi the content of this report will be used to support funding applications to realize the communities' vision for their recreational area.

Methodology

A community event was held during the morning of Saturday 20th August at the Llanon Tennis Courts. The event was aimed at children, young people and their parents/grandparents as well as community leaders.

The consultation event and material was very 'young person friendly' in order to engage with our key stakeholders effectively. Free food was made available along with a free play session which was delivered as part of the consultation. This resulted in more people being attracted to attend the event. The consultations were visual, interactive and bilingual using:

- 2D visualisation – with photos and drawing of plans
- Short, structured discussion sessions
- Image based questionnaires

Promotion/Marketing

The event was advertised by poster, word of mouth and via social media. Local representatives distributed hard copies of the invitation and circulated an electronic version to encourage community participation.

Survey Questions

The content of the consultation survey was intentionally kept short and simple and focused on three key areas - what participants use to stay active in their community, why these places and spaces are important and what would people change in their community to encourage people to stay active. We also asked participants to rate their level of activity from 1 to 10. A second survey was developed as a guide to conduct more detailed conversations with key community stakeholders.

Description of Area

Situated in the Llansantffraed Ward at a central point along Ceredigion's coast and divided by the busy A487, Llanon's name stems from its association with Saint Non, the mother of St David, the patron saint of Wales and who was born about 500 AD and was brought up here. The village prospered in the 18th and 19th centuries with industries rooted in the land and on the sea. In 1861, shipbuilding employed 130 men out of a population of 1,300. It was at this period that much of the village was developed; several Nonconformist chapels and a school were built, and the village enjoyed a large range of shops and services including five pubs and a brewery, three blacksmiths, shoemakers, wheelwrights and a bakery.

The primary school, Ysgol Gynradd Llannon, overlooks the village and Cardigan Bay and the village has retained two pubs, two garages, a butcher, convenience store, fish and chip shop, hairdresser and a Chinese takeaway. Llanon is well served for recreational opportunities and facilities include the following;

- Tennis Courts and Club;
- Snooker Room (Village Hall);
- Badminton (Village Hall);
- Football Club;
- Playing Field;
- Judo Classes (Village Hall);
- Beach and Footpaths.

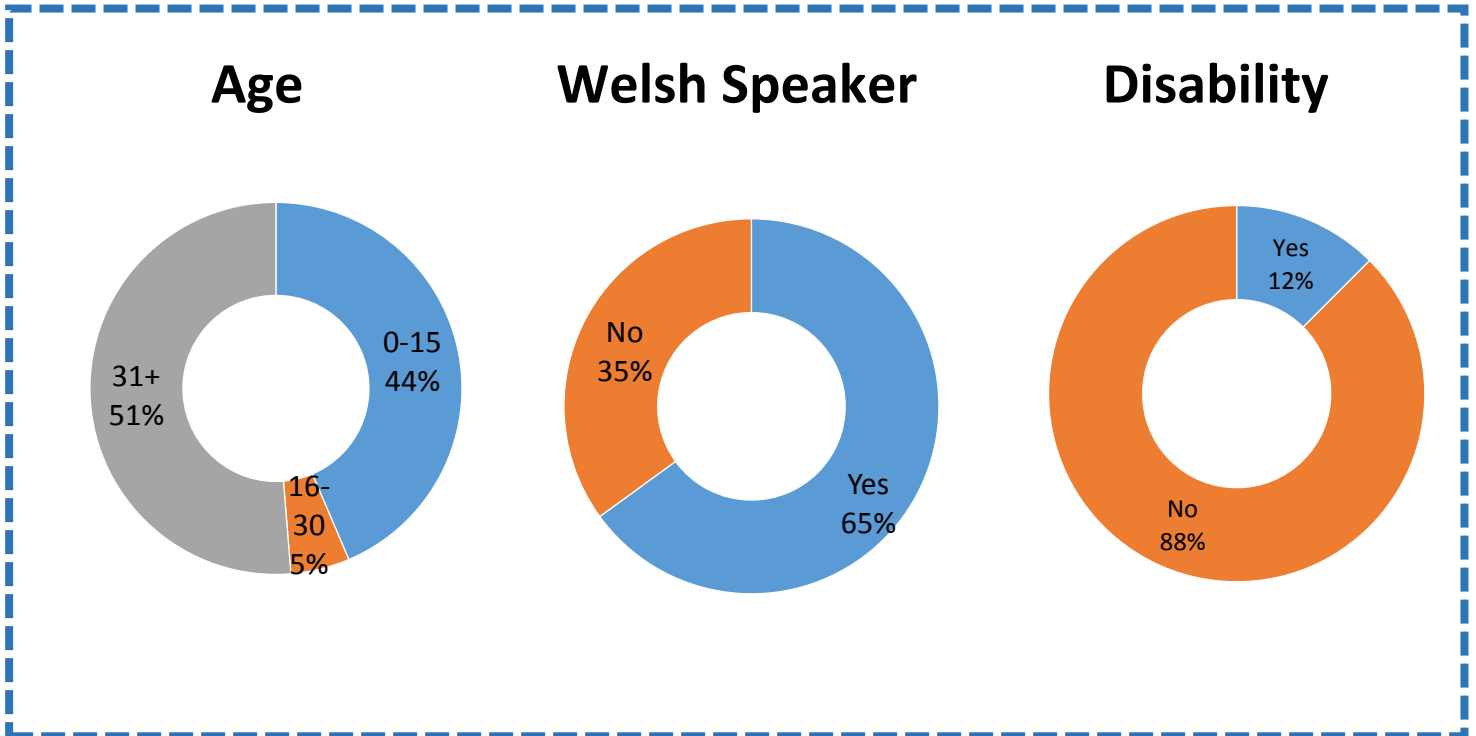
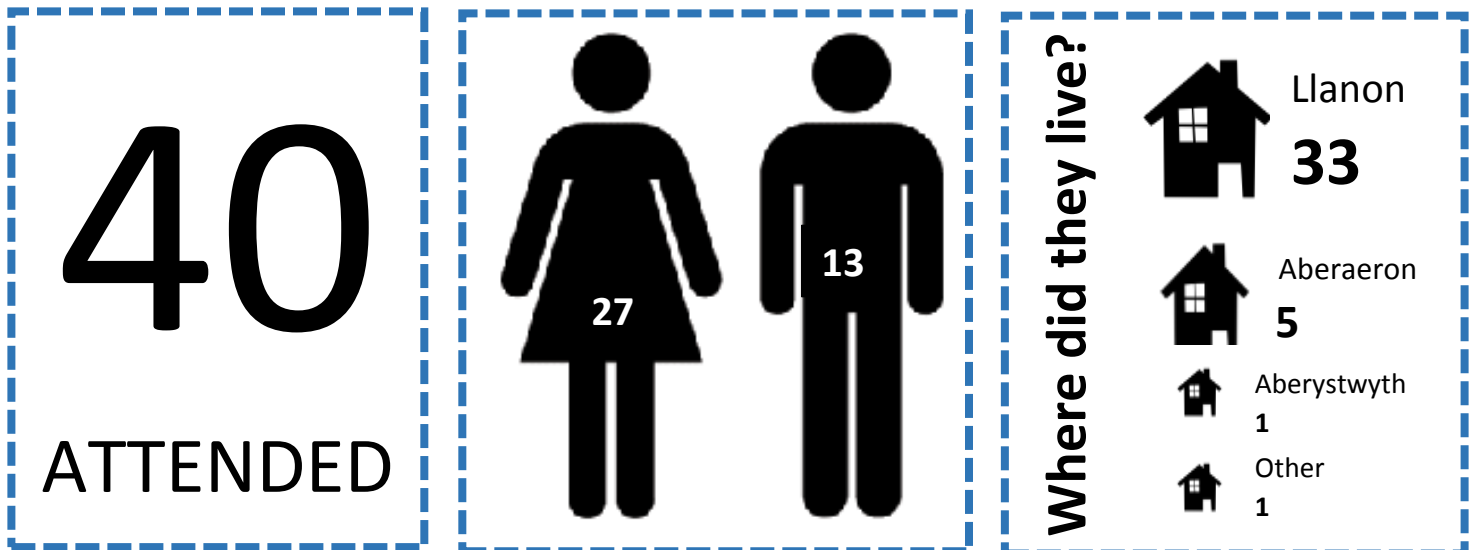


Llanon is served on regular key bus routes between Aberystwyth in the north and Cardigan and Carmarthen in the south, but the cost of travel to leisure facilities in Aberystwyth and Aberaeron can be restrictive.

Results of Consultation

Who Attended?

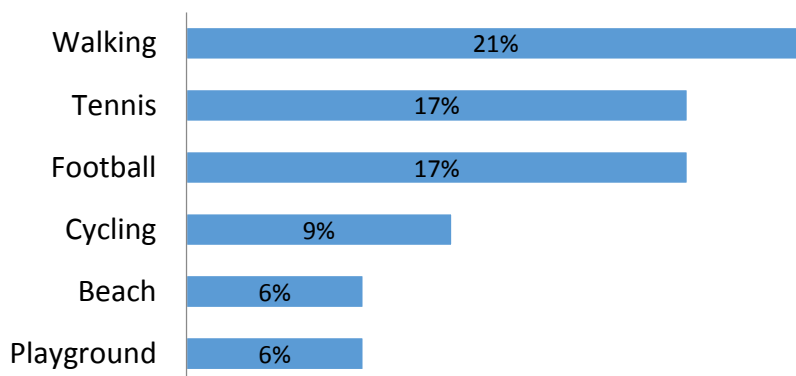
40 individuals attended the consultation session, 33 of which lived in Llanon. 51% were over 31 years of age, with 44% under 15 years. 68% were female, 32% male. 65% noted that they were able to speak Welsh and of those who attended 88% said that they didn't class themselves as having a disability.



What They Said?

When asked what do people do and use in Llanon to stay active a variety of resources were mentioned, with assets available locally proving to be popular – walking paths, the beach and recreational spaces. People felt that these spaces were important as they were free, local and gave the option for people to participate if they wanted to. Recommendations for changes included better knowledge of what is already happening in the community along with the need for improved facilities. The full results can be seen in the appendices.

Top 6 things people use or do in Llanon to keep active



Why are play/open spaces important to the people of Llanon?



Things to change in Llanon to help people stay active

1. More advertising of events
2. Suitable flooring for multi-sports area
- 3= Better links with school
- 3= More shops and pubs
- 3= Something for teenagers

Key Findings

Llanon Tennis Court is well supported by the local community and visitors. The Junior Tennis Club has been re-started which has encouraged more families to use the courts. It would be sensible to link any new facilities with existing, well used facilities.

Promoting the availability of these resources widely in the community is essential to encourage use.

A proactive, organised approach has worked to increase participants to play tennis; encouraging and increasing the use of existing facilities. A greater number of local volunteers will need to be identified to support and encourage any additional activities linked to the MUGA Court.

Local recreation spaces in Llanon are valued in encouraging children to stay active and develop new skills and the social rewards for children and young people getting together through play is recognised.

There is very little for young people over the age of 12 to do as the playground is more for children under 12 years. It is important that the community “owns” the facilities and equipment to reduce the risk of misuse and vandalism.

Engagement between the community and the school is important.

Future Actions

- Support the community of Llanon to look for funding to implement some of the suggestions from the consultation, include the school and Community Council as key partners.
- Identify costs of resurfacing work and establishing a MUGA Court.
- Implement a volunteer recruitment scheme to identify volunteers to support and encourage any additional activities.
- Co-design a programme of activity sessions for adults and the elderly, such as walking football, to encourage those of all abilities and all ages to improve their wellbeing.
- Promote the availability of resources widely in the community to encourage use.
- Purchase benches so that spectators can be engaged in activities.

Appendices

Action Plan Template

Basic Planning Tool

Objective:						
Intended Outcomes:						
What needs to be done?	How are you going to do this?	By when?	Who will be responsible?	What will we need?	What needs to be done?	How will we know if we have been successful?
Tasks	Strategy	Time frame	Structure / Partners		Resources	Monitor /Evaluate

Postcard Survey

PARRC – Village Party Survey

Location: _____

What 3 things do people use and do to stay active in your community?

1.
2.
3.

Why do you think these spaces / places are important?

.....

.....

.....

What 3 things would you change in your community to help people stay active?

1.
2.
3.

On a scale of 1 to 10 how active are you?



1 2 3 4 5 6 7 8 9 10



Key Community Statistics

Llanon is located within the Lower Super Output Area (LSOA) called Llansantffraed 2. LSOA all have a population of around 1,600 people for easy comparison. Llangeitho LSOA is classified as **Rural village and dispersed in a sparse setting**. The National Statistics area classification is **Farming and Forestry**.

Population

In 2015 the estimated resident population for Llansantffraed 2 LSOA was 1,209. The population density was 95 people per km², compared to 42 people per km² for Ceredigion and 149 people per km² for Wales. In the last five years, the population of Llansantffraed 2 has seen a decrease of 3.9% (45 people). (*InfoBase Cymru website*)

Population by age band						
All Ages	0-15 year olds		16-30 year olds		People aged 31+	
1,209	194	16%	140	12%	875	72%

58% of people living in Llansantffraed 2 were born in Wales, 38% were born in the UK, outside of Wales and 4% were born outside of the UK. 53% of people aged 3 and above reported that they could speak Welsh (*2011 census*).

Welsh Index of Multiple Deprivation (WIMD) 2014

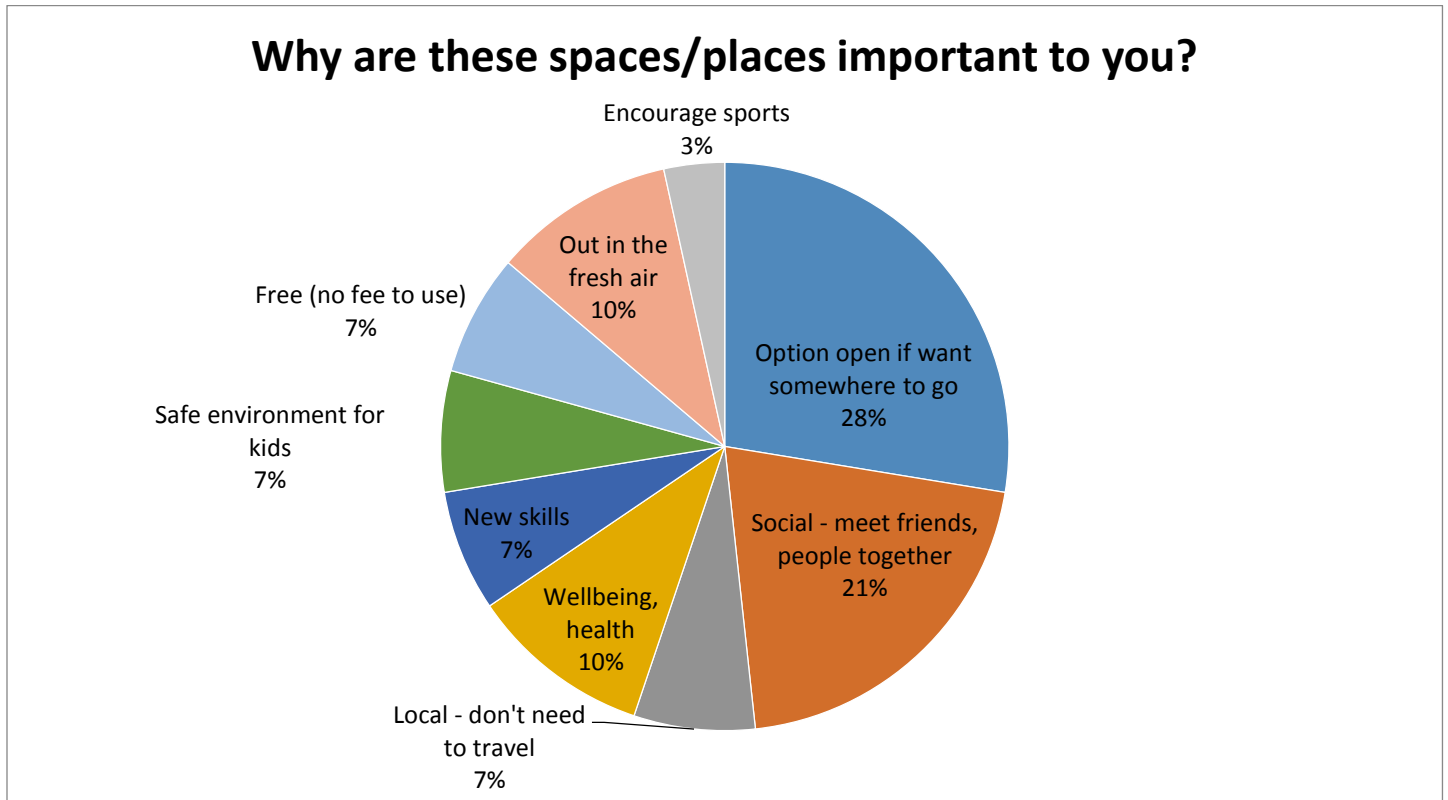
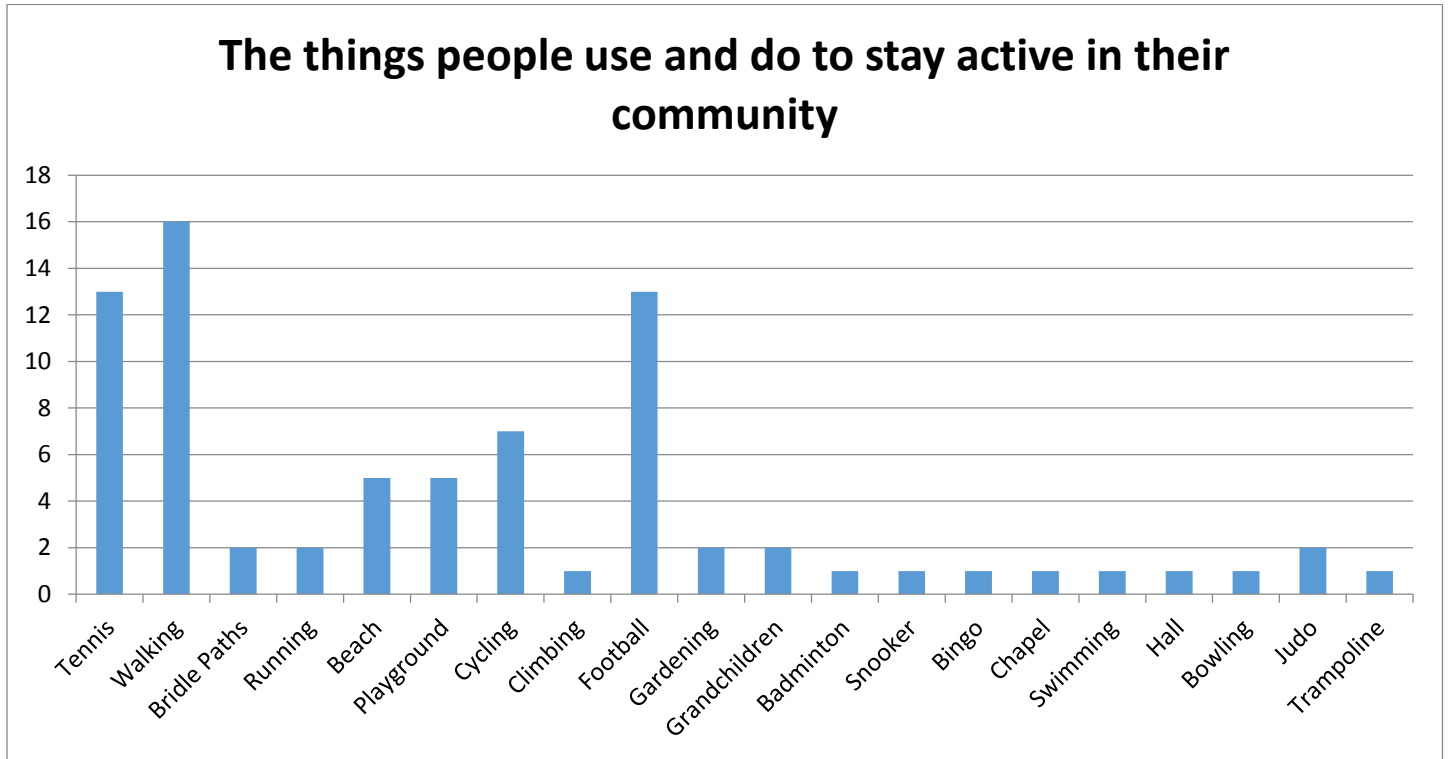
The WIMD is the official measure of relative deprivation for small areas in Wales. It is designed to identify those small areas where there are the highest concentrations of several different types of deprivation.

In 2014 Llansantffraed 2 ranked 1,131rd out of 1,909 in Wales on the WIMD (where 1 is most deprived). It has a relatively positive ranking in most areas of deprivation but does not do so well in 'Access to Services' and 'Housing'. (*Local Government Data Unit – Wales*)

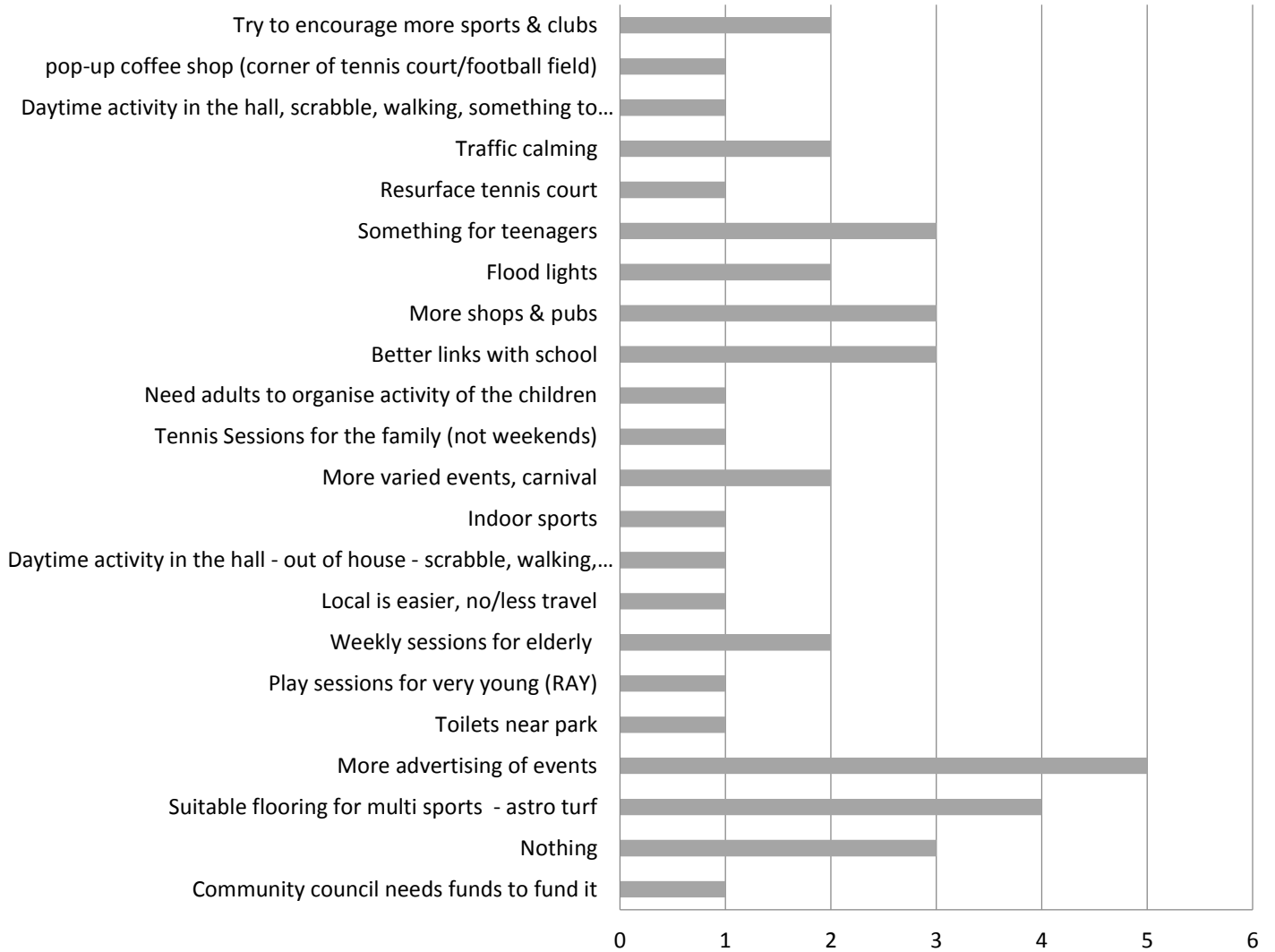
22% of the children in Llansantffraed 2 live in low income families (families in receipt of Child Tax Credits whose reported income is less than 60 per cent of the median income or in receipt of Income Support or Income-Based JSA, divided by the total number of children in the area) (*InfoBase Cymru website*).



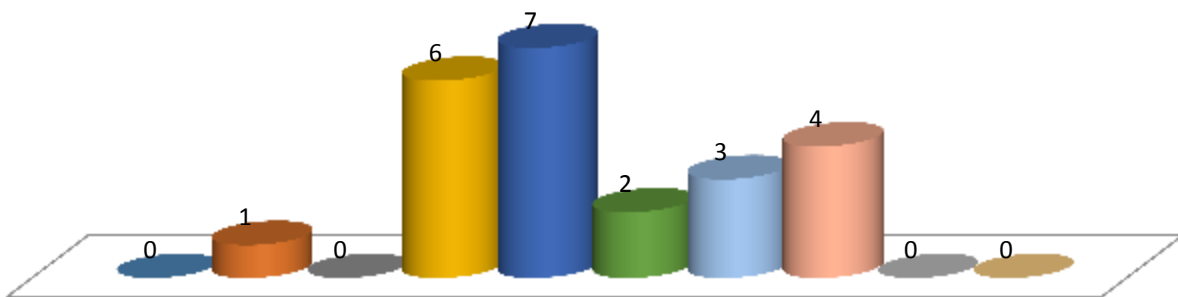
Full Consultation Results



What would you change in your community to help people stay active?



On a scale of 1 to 10 how active are you?



Community Conversations

- The Tennis courts were built 20 years ago when Llanon had an active tennis club. People still use the courts, locals and visitors and a junior club has re-started. But is unsure about having a multi-sports area and concerns of people misusing, vandalism.
- Get more variety - instead of just football, beach or park. More choice, more kids would get involved.
- Form a community group (not community council) to meet 3 to 4 times a year to discuss what the needs are and how facilities will be funded.
- Raise awareness of what facilities are available locally, especially newcomers to the area.
- Would like the tennis courts resurfaced as a minimum.
- Need people to lead on arranging activities and clubs.
- The School is key – they use it weekly
- Since the tennis club started, families have started using the courts more
- People are in the habit of using the site for one sport, familiar and comfortable here. So would be good to do more sports here.
- If more people use the courts, it attracts others to use it.
- I vote against having a MUGA court – me too. There are plenty of fields around here for football and rugby. We've just moved here and come to play tennis here already. Perhaps a compromise – one net up for tennis all the time? If tennis players are in the minority the end result would be no nets. This surface is fine for tennis, it's not optimal but will do. I'd rather this was a dedicated place for tennis.
- Our son loves playing tennis.
- The school do use the courts in term time – would they use it more if it was a MUGA?
- I like the different colours for the goals at each end (referring to specific design so it's more accessible to those with a visual impairment).
- Perhaps it would have more use if there was basketball as well – I come up to play tennis as well, with my friends and the little one.
- One quarter of people in Llansantffraed are pensioners. On average about two-thirds of pensioners have a disability. There is a WI and Merched y Wawr in Llanon, Llansantffraed feels abandoned.
- I never see children playing football on the football field
- Something to keep them off the video games would be a good thing.
- It depends what other uses it would have – I would like one permanent tennis court and one MUGA court.
- What about ongoing maintenance?
- I would like somewhere to play hockey – that needs a special surface.
- We wouldn't want so many options that the tennis option is lost.
- Perhaps we could hold the carnival up here next year?
- They used to play cricket down on the field. The cricket equipment is still around somewhere.
- 5 a side football would be good.
- I think it's a fabulous idea – there are toilets nearby, it's wheelchair accessible, there's good parking.
- A seat to watch people playing would be good – outside the courts. Netball is good, I'd come and watch netball.
- I'd like one tennis court with a traditional surface and one MUGA court with a soft surface.

- Benches inside around the edge would be good – simple ones...like in bus stops
- We could stick to the seasons – the tennis season is in the summer then from September to March it could be a multi-purpose facility.
- A softer surface would be really good up here – would it be easier to maintain?
- Astro turf would be good.
- We do come up occasionally. We might come up more often if the surface was softer.
- Why not put a screen between the two and have one tennis court and one MUGA court?
- The school use it a bit but I don't see them here a lot.
- Resurface it and have one tennis court all the time and the other court as a MUGA
- The play area is ok for 7 years and under. A youth club would be good – just a couple of hours a week – table tennis or something.
- There are a lot of buildings in Llanon – the village hall, the scout hall – they could be used.
- This is a perfect set up – it needs high enough fencing.
- It needs to be as vandal proof as possible. I see the way it's used every day when I walk past. Is it in the constitution that it can be changed from a tennis court?